

## Mouse CXCL12, His Tag, E. coli

**Catalog Number** LDG014PME

**Package** 5 µg / 20 µg / 100 µg / Customized package

For full product information, images and publications, please visit [our website](#).



### Specifications

#### Species of Origin

Mouse

#### Affinity Tag

His Tag (C-term)

#### Purity

>98% as determined by SDS-PAGE analysis.

#### Activity

Measure by its ability to chemoattract human THP1 cells using a concentration range of 100-200 ng/mL.

#### Form

Lyophilized

#### Expression system

Escherichia coli

#### Buffer

Lyophilized from a 0.2 µm filtered solution of PBS, pH 7.4.

#### Molecular weight

The protein has a calculated MW of 8.97 kDa. The protein migrates below 8-11 kDa under reducing condition (SDS-PAGE analysis).

#### Endotoxin level

<0.1 EU per 1 µg of the protein by the LAL method.

### Background

#### Tainan Headquarter

+886-6-2536677

bd@leadgene.com.tw

#### Innovation & Research Center

+886-2-27065528

#### CLD Center

+886-6-2536677

### Background

C-X-C motif chemokine 12 (CXCL12) also named stromal cell-derived factor 1 (SDF-1), which is a chemokine of the intercrine alpha family. CXCL12 is a 7.8 kDa protein containing 70 amino acid residues. CXCL12 has a key role in controlling the immune responses which is often induced by the lipopolysaccharide or IL-1. CXCL12 also activates the leukocytes during inflammation. CXCL12 induces the migration and proliferation of cells like hematopoietic progenitor, stem cells and leukocytes.

### Uniprot ID

#P40224

### Synonyms

Stromal cell-derived factor 1, SDF-1, 12-O-tetradecanoylphorbol 13-acetate repressed protein 1, TPAR1, C-X-C motif chemokine 12, Pre-B cell growth-stimulating factor, PBSF, hymic lymphoma cell-stimulating factor, TLSF

### Sequence Note

Gly21-Lys89

## Instruction

### Reconstitution

It is recommended to reconstitute the lyophilized protein in sterile H<sub>2</sub>O to a concentration not less than 200 µg/mL and incubate the stock solution for at least 20 min to ensure sufficient re-dissolved.

### Stability & Storage

This product is stable after storage at:

- -20°C for 12 months in lyophilized state from date of receipt.
- -20°C or -80°C for 1 month under sterile conditions after reconstitution.

Avoid repeated freeze/thaw cycles.

### Shipping

The product is shipped with polar packs. Upon receipt, store it immediately at -20°C or lower for long term storage.

## Image

### Tainan Headquarter

+886-6-2536677

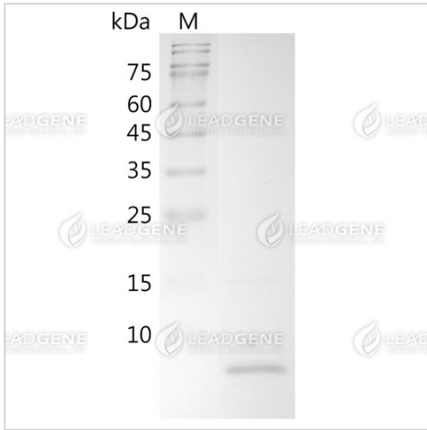
bd@leadgene.com.tw

### Innovation & Research Center

+886-2-27065528

### CLD Center

+886-6-2536677



SDS-PAGE analysis of recombinant mouse CXCL12.

**Disclaimer :** For Research Use or Further Manufacturing Only.