

Anti-Influenza A Virus NP Antibody [Clone LGA3]

Catalog Number LDG0171YA

Package 100 µg / Customized package

For full product information, images and publications, please visit [our website](#).



Overview

Description

Human anti-influenza A virus NP antibody only recognizes nucleocapsid protein (NP) of influenza A viruses but not influenza B viruses. Influenza A viruses are RNA viruses, and their subtypes are labeled according to an H number (for the type of hemagglutinin) and an N number (for the type of neuraminidase).

Product Note

Recognize Influenza A virus NP in Lateral Flow and ELISA, when recombinant LGA3 antibody was paired with Anti-Influenza A virus NP Antibody [clone IA05] (cat. LDG0172YA).

Recommended dilution factor:
ELISA: 1:5000-20000

Note: Working dilution for specific application should be determined by the investigator to obtain the best conditions.

Specifications

Clonality

Recombinant human IgG

Isotype

IgG1

Clone Name

clone LGA3

Reactivity

Influenza A virus

Application

ELISA, CLIA, LFIA

Conjugation

Unconjugated

Concentration

1 mg/mL

Buffer

Phosphate Buffered Saline containing 0.03% ProClin 300, pH 7.4.

Specificity

Nucleocapsid protein

Form

Liquid

Instruction
Shipping

The product is shipped with polar packs. Upon receipt, store it immediately at -20°C or lower for long term storage.

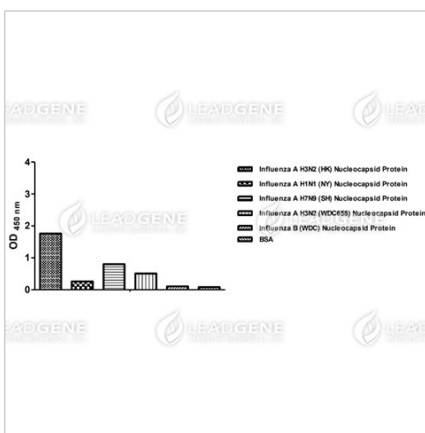
Stability & Storage

This product is stable after storage at:

- 2-8°C for 2 weeks under sterile conditions from date of receipt.
- -20°C or -80°C for 12 months under sterile conditions from date of receipt.

Avoid repeated freeze/thaw cycles.

Suggestion: Divide antibody into several vials. Keep only vials for usage at 2-8°C.

Image


ELISA titration of Anti-Influenza A virus NP Antibody [Clone LGA3]

Disclaimer : For Research Use or Further Manufacturing Only.

Tainan Headquarter

+886-6-2536677

bd@leadgene.com.tw

Innovation & Research Center

+886-2-27065528

CLD Center

+886-6-2536677

Tainan Headquarter

+886-6-2536677

bd@leadgene.com.tw

Innovation & Research Center

+886-2-27065528

CLD Center

+886-6-2536677