

Human Sonic Hedgehog (C24II), Tag Free, HEK293

Catalog Number LDG017PVM

Package 5 µg / 20 µg / 100 µg / Customized package

For full product information, images and publications, please visit [our website](#).



Specifications

Species of Origin

Human

Affinity Tag

Tag Free

Purity

>95% as determined by SDS-PAGE analysis.

Activity

Measured by its ability to induce alkaline phosphatase production by C3H/10T1/2 mouse embryonic fibroblast cells. The ED₅₀ for this effect is 0.5-2 µg/mL.

Form

Lyophilized

Expression system

HEK293

Buffer

Lyophilized from a 0.2 µm filtered solution of PBS, pH 7.4.

Molecular weight

The protein has a calculated MW of 19.67 kDa. The protein migrates as 15-25 kDa under reducing condition (SDS-PAGE analysis).

Endotoxin level

<0.1 EU per 1 µg of the protein by the LAL method.

Background

Tainan Headquarter

+886-6-2536677

bd@leadgene.com.tw

Innovation & Research Center

+886-2-27065528

CLD Center

+886-6-2536677

Background

Sonic hedgehog protein (SHH) plays a critical role in development of embryonic morphogenesis which mediate the process of organogenesis and central nervous system. The sonic hedgehog signal pathway also plays an important role in cancerous tumors like embryonic cerebellar tumor, prostate cancer tumours and medulloblastoma. Shh binds the receptor (Ptc1) that induce the smo protein to activate the downstream pathway, which induce the shh target gene expression.

Uniprot ID

#Q15465

Synonyms

Sonic hedgehog protein, SHH, HHG-1, Shh unprocessed N-terminal signaling and C-terminal autoprocessing domains, ShhNC

Sequence Note

Gly25-Gly197

Instruction

Reconstitution

It is recommended to reconstitute the lyophilized protein in sterile H₂O to a concentration not less than 200 µg/mL and incubate the stock solution for at least 20 min to ensure sufficient re-dissolved.

Stability & Storage

This product is stable after storage at:

- -20°C for 12 months in lyophilized state from date of receipt.
- -20°C or -80°C for 1 month under sterile conditions after reconstitution.

Avoid repeated freeze/thaw cycles.

Shipping

The product is shipped with polar packs. Upon receipt, store it immediately at -20°C or lower for long term storage.

Image

Tainan Headquarter

+886-6-2536677

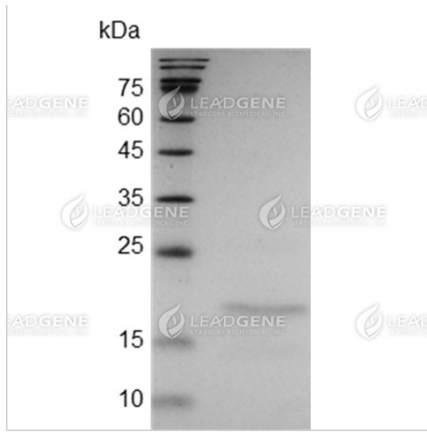
bd@leadgene.com.tw

Innovation & Research Center

+886-2-27065528

CLD Center

+886-6-2536677



SDS-PAGE analysis of Human
Sonic Hedgehog (C24II).

Disclaimer : For Research Use or Further Manufacturing Only.