

Anti-Flavivirus E IgM Antibody

Catalog Number LDG0223YA

Package 100 µg / Customized package

For full product information, images and publications, please visit [our website](#).



Overview

Description

The Flavivirus E protein, also known as the envelope protein, is a crucial component of the Flavivirus virion (the infectious particle). Flaviviruses are a family of RNA viruses that include several significant human pathogens such as dengue virus, Zika virus, yellow fever virus, and West Nile virus.

Specifications

Clonality

Recombinant Human IgM

Reactivity

Flavivirus

Conjugation

Unconjugated

Buffer

Phosphate Buffered Saline containing 0.03% Proclin300, pH 7.4.

Form

Liquid

Immunogen

Flavivirus E protein

Application

ELISA, LFA

Concentration

Lot-dependent, please refer to product label.

Specificity

Envelope protein

Instruction

Tainan Headquarter

+886-6-2536677

bd@leadgene.com.tw

Innovation & Research Center

+886-2-27065528

CLD Center

+886-6-2536677

Shipping

The product is shipped with polar packs. Upon receipt, store it immediately at 2-8°C for long term storage.

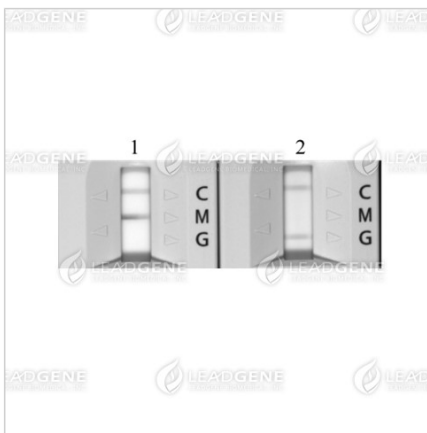
Stability & Storage

This product is stable after storage at:

- 2-8°C for 6 months under sterile conditions from date of receipt.

Briefly centrifuge vials before opening.

Image



The Anti-Flavivirus E IgG Antibody (LDG0222YA) can be detected by commercial Dengue virus (DENV) Antibody Rapid Test.

Lane 1 : Anti-Flavivirus E IgM Antibody (LDG0223YA) Lane 2 : Anti-Flavivirus E IgG Antibody (LDG0222YA)

Disclaimer : For Research Use or Further Manufacturing Only.