

## Mouse IL-36 Gamma, His Tag, E. coli

**Catalog Number** LDG058PME

**Package** 5 µg / 20 µg / 100 µg / Customized package

For full product information, images and publications, please visit [our website](#).



### Specifications

#### Species of Origin

Mouse

#### Affinity Tag

His Tag (C-term)

#### Purity

>98% as determined by SDS-PAGE analysis.

#### Activity

Measure by its ability to induce IL-6 secretion in 3T3 cells. The ED<sub>50</sub> for this effect is <15 ng/mL. The specific activity of recombinant mouse IL-36 gamma is > 6 x 10<sup>4</sup> IU/mg.

#### Form

Lyophilized

#### Expression system

Escherichia coli

#### Buffer

Lyophilized from a 0.2 µm filtered solution containing 50 mM Tris, 150 mM NaCl, pH 8.5.

#### Molecular weight

The protein has a calculated MW of 18.27 kDa. The protein migrates about 17 kDa under reducing condition (SDS-PAGE analysis).

#### Endotoxin level

<0.1 EU per 1 µg of the protein by the LAL method.

### Background

#### Tainan Headquarter

+886-6-2536677

bd@leadgene.com.tw

#### Innovation & Research Center

+886-2-27065528

#### CLD Center

+886-6-2536677

### Background

Interleukin 36 gamma (IL-36 gamma) is a 17.65 kDa cytokine with 159 amino acid residues. IL-36 gamma is a member of the IL-1 family and is mainly expressed in keratinocytes, bronchial epithelial cells, macrophages, and monocyte. This cytokine responds to multiple pathogen-associated molecular patterns (PAMPs) and participates in the inflammatory response. In addition, it also induces the production of pro-inflammatory cytokines like IL-12, IL-1 $\beta$ , IL-6, TNF- $\alpha$ , and IL-23.

### Uniprot ID

#Q8R460

### Synonyms

Interleukin-36 gamma, Interleukin-1 family member 9, IL-1F9

### Sequence Note

Gly13-Ser164

## Instruction

### Reconstitution

It is recommended to reconstitute the lyophilized protein in sterile H<sub>2</sub>O to a concentration not less than 200  $\mu$ g/mL and incubate the stock solution for at least 20 min to ensure sufficient re-dissolved.

### Stability & Storage

This product is stable after storage at:

- -20°C for 12 months in lyophilized state from date of receipt.
- -20°C or -80°C for 1 month under sterile conditions after reconstitution.

Avoid repeated freeze/thaw cycles.

### Shipping

The product is shipped with polar packs. Upon receipt, store it immediately at -20°C or lower for long term storage.

## Image

### Tainan Headquarter

+886-6-2536677

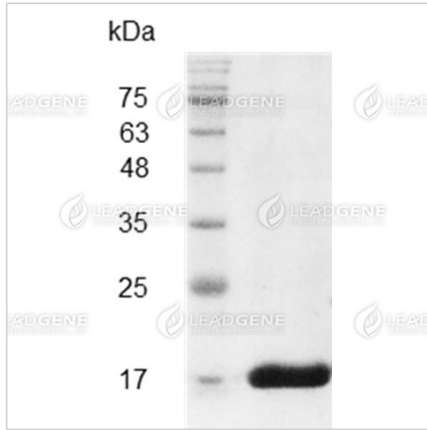
bd@leadgene.com.tw

### Innovation & Research Center

+886-2-27065528

### CLD Center

+886-6-2536677



SDS-PAGE analysis of  
recombinant mouse IL-36  
gamma.

**Disclaimer :** For Research Use or Further Manufacturing Only.