

Human GIF, His Tag, E. coli

Catalog Number	LDG061PHE
Package	5 µg / 20 µg / 100 µg / Customized package

For full product information, images and publications, please visit [our website](#).



Specifications

Species of Origin

Human

Affinity Tag

His Tag (C-term)

Purity

>98% as determined by SDS-PAGE analysis.

Endotoxin level

<0.1 EU per 1 µg of the protein by the LAL method.

Expression system

Escherichia coli

Buffer

Lyophilized from a 0.2 µm filtered solution of PBS, pH 8.0.

Molecular weight

The protein has a calculated MW of 46.23 kDa. The protein migrates as 43 kDa under reducing condition (SDS-PAGE analysis).

Form

Lyophilized

Background

Tainan Headquarter

+886-6-2536677

bd@leadgene.com.tw

Innovation & Research Center

+886-2-27065528

CLD Center

+886-6-2536677

Background

Human Gastric intrinsic factor (GIF) is an intrinsic factor of the eukaryotic cobalamin family. Gastric intrinsic factor is a 44 kDa protein containing 380 amino acid residues. It is secreted from the parietal cells in gastric mucosa. Gastric intrinsic factor plays a major role in absorption and transportation of cobalamin and Cbl. It could form the complex with Vit.B12 that avoid the destroy of Vit.B12.

Uniprot ID

#P27352

Synonyms

Cobalamin binding intrinsic factor, Gastric intrinsic factor, Intrinsic factor

Sequence Note

Met1-Tyr417

Instruction

Reconstitution

It is recommended to reconstitute the lyophilized protein in sterile H₂O to a concentration not less than 200 µg/mL and incubate the stock solution for at least 20 min to ensure sufficient re-dissolved.

Stability & Storage

This product is stable after storage at:

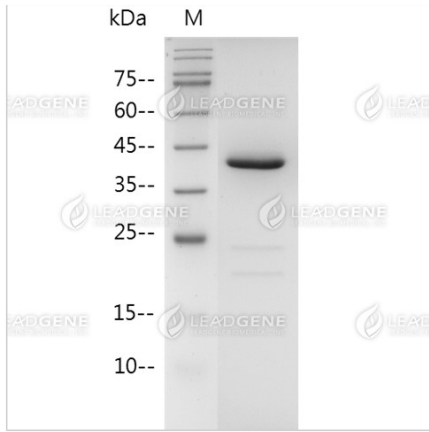
- -20°C for 12 months in lyophilized state from date of receipt.
- -20°C or -80°C for 1 month under sterile conditions after reconstitution.

Avoid repeated freeze/thaw cycles.

Shipping

The product is shipped with polar packs. Upon receipt, store it immediately at -20°C or lower for long term storage.

Image



SDS-PAGE analysis of recombinant human GIF.

Disclaimer : For Research Use or Further Manufacturing Only.