

## Mouse SIRP Alpha, His Tag, CHO

**Catalog Number** LDG071PMM

**Package** 5 µg / 20 µg / 100 µg / Customized package

For full product information, images and publications, please visit [our website](#).



### Specifications

#### Species of Origin

Mouse

#### Affinity Tag

His Tag (C-term)

#### Purity

>95% as determined by SDS-PAGE analysis.

#### Activity

Measured by its ability to support the adhesion of red blood cells, with the ED50 being < 3 µg/mL.

#### Mycoplasma

Not detected

#### Expression system

CHO

#### Buffer

Lyophilized from a 0.2 µm filtered solution of PBS, pH 7.4.

#### Molecular weight

The protein has a calculated 38.74 MW of kDa. The protein migrates as 45-75 kDa under reducing condition (SDS-PAGE analysis).

#### Endotoxin level

<0.1 EU per 1 µg of the protein by the LAL method.

#### Form

Lyophilized

### Background

#### Tainan Headquarter

+886-6-2536677

bd@leadgene.com.tw

#### Innovation & Research Center

+886-2-27065528

#### CLD Center

+886-6-2536677

### Background

Signal regulatory protein alpha (SIRP $\alpha$ ) is a receptor that regulates immune responses by interacting with CD47. It plays a role in macrophage activation and is being targeted in cancer immunotherapy.

### Sequence Note

Thr32-Asn373

### Synonyms

Tyrosine-protein phosphatase non-receptor type substrate 1, SHP substrate 1, SHPS-1, Brain Ig-like molecule with tyrosine-based activation motifs, Bit, CD172 antigen-like family member A, Inhibitory receptor SHPS-1, MyD-1 antigen, Signal-regulatory protein alpha-1, Sirp-alpha-1, mSIRP-alpha1, p84, CD172a

## Instruction

### Reconstitution

It is recommended to reconstitute the lyophilized protein in sterile H<sub>2</sub>O to a concentration not less than 200  $\mu$ g/mL and incubate the stock solution for at least 20 min to ensure sufficient re-dissolved.

### Stability & Storage

This product is stable after storage at:

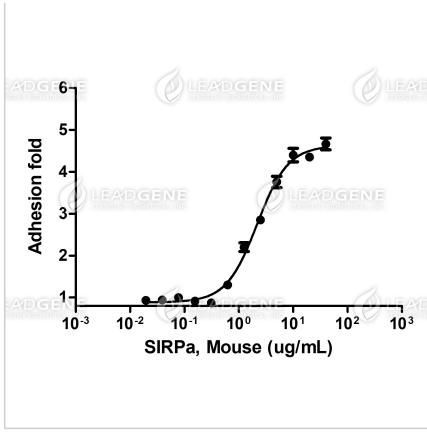
- -20°C for 12 months in lyophilized state from date of receipt.
- -20°C or -80°C for 1 month under sterile conditions after reconstitution.

Avoid repeated freeze/thaw cycles.

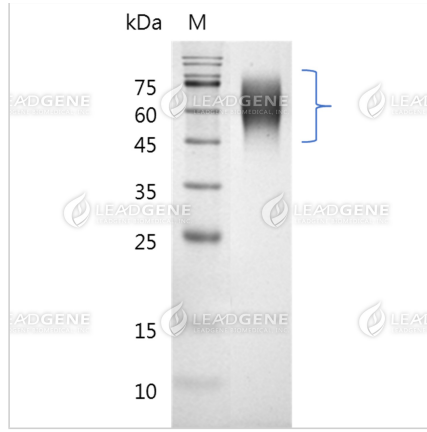
### Shipping

The product is shipped with polar packs. Upon receipt, store it immediately at -20°C or lower for long term storage.

## Image



Mouse SIRP Alpha, His Tag, CHO (LDG071PMM) supports the adhesion of red blood cells, with the ED50 being < 3 µg/mL.



SDS-PAGE analysis of recombinant mouse SIRP Alpha.

**Disclaimer :** For Research Use or Further Manufacturing Only.