

## Human IL-17A, His Tag, CHO

**Catalog Number** LDG072PHM

**Package** 5 µg / 20 µg / 100 µg / Customized package

For full product information, images and publications, please visit [our website](#).



### Specifications

#### Species of Origin

Human

#### Affinity Tag

His Tag (N-term)

#### Purity

>80% as determined by SDS-PAGE analysis.

#### Endotoxin level

<0.1 EU per 1 µg of the protein by the LAL method.

#### Form

Lyophilized

#### Expression system

CHO

#### Buffer

Lyophilized from a 0.2 µm filtered solution of PBS, pH 7.4.

#### Molecular weight

The protein has a calculated MW of 15.95 kDa. The protein migrates as 13-22 kDa under reducing condition (SDS-PAGE analysis).

#### Mycoplasma

Not detected.

### Background

#### Tainan Headquarter

+886-6-2536677

bd@leadgene.com.tw

#### Innovation & Research Center

+886-2-27065528

#### CLD Center

+886-6-2536677

### Background

Interleukin-17A (IL-17A) is a pro-inflammatory cytokine produced by Th17 cells. It is involved in the immune response against bacterial and fungal infections and plays a significant role in autoimmune diseases such as psoriasis and rheumatoid arthritis.

### Uniprot ID

Q16552

### Synonyms

Interleukin-17A, IL-17, IL-17A, Cytotoxic T-lymphocyte-associated antigen 8, CTLA-8, IL17a, Ctla8, IL17

### Sequence Note

Gly24-Ala155

## Instruction

### Reconstitution

It is recommended to reconstitute the lyophilized protein in sterile H<sub>2</sub>O to a concentration not less than 200 µg/mL and incubate the stock solution for at least 20 min to ensure sufficient re-dissolved.

### Stability & Storage

This product is stable after storage at:

- -20°C for 12 months in lyophilized state from date of receipt.
  - -20°C or -80°C for 1 month under sterile conditions after reconstitution.
- Avoid repeated freeze/thaw cycles.

### Shipping

The product is shipped with polar packs. Upon receipt, store it immediately at -20°C or lower for long term storage.

## Image

### Tainan Headquarter

+886-6-2536677

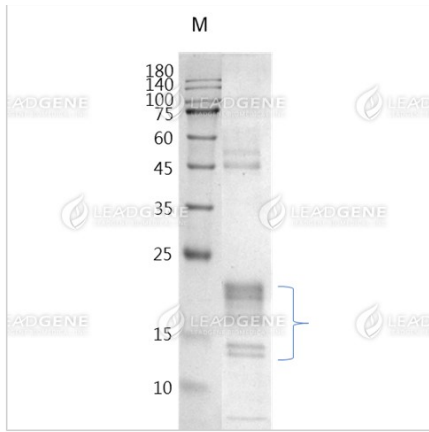
bd@leadgene.com.tw

### Innovation & Research Center

+886-2-27065528

### CLD Center

+886-6-2536677



SDS-PAGE analysis of recombinant human IL-17A.

**Disclaimer :** For Research Use or Further Manufacturing Only.