

## Human CD56, His Tag, CHO

**Catalog Number** LDG087PHM

**Package** 5 µg / 20 µg / 100 µg / Customized package

For full product information, images and publications, please visit [our website](#).



### Specifications

#### Species of Origin

Human

#### Affinity Tag

His Tag (C-term)

#### Purity

>95% as determined by SDS-PAGE analysis.

#### Activity

Measured by its ability to support the adhesion of SH-SY5Y human neuroblastoma cells, with the ED50 ranging from 0.1 to 3 µg/mL.

#### Mycoplasma

Not detected

#### Expression system

CHO

#### Buffer

Lyophilized from a 0.2 µm filtered solution of PBS, pH 7.4.

#### Molecular weight

The protein has a calculated MW of 65.5 kDa. The protein migrates as 75-140 kDa under reducing condition (SDS-PAGE analysis).

#### Endotoxin level

<0.1 EU per 1 µg of the protein by the LAL method.

#### Form

Lyophilized

### Background

#### Tainan Headquarter

+886-6-2536677

bd@leadgene.com.tw

#### Innovation & Research Center

+886-2-27065528

#### CLD Center

+886-6-2536677

**Background**

CD56, or NCAM, is a neural cell adhesion molecule involved in cell-cell adhesion, found in natural killer (NK) cells and certain tumors.

**Uniprot ID**

P13591

**Synonyms**

Neural cell adhesion molecule 1, N-CAM-1, NCAM-1, CD56

**Sequence Note**

Met1-Pro603

**Instruction****Reconstitution**

It is recommended to reconstitute the lyophilized protein in sterile H<sub>2</sub>O to a concentration not less than 200 µg/mL and incubate the stock solution for at least 20 min to ensure sufficient re-dissolved.

**Stability & Storage**

This product is stable after storage at:

- -20°C for 12 months in lyophilized state from date of receipt.
- -20°C or -80°C for 1 month under sterile conditions after reconstitution.

Avoid repeated freeze/thaw cycles.

**Shipping**

The product is shipped with polar packs. Upon receipt, store it immediately at -20°C or lower for long term storage.

**Image****Tainan Headquarter**

+886-6-2536677

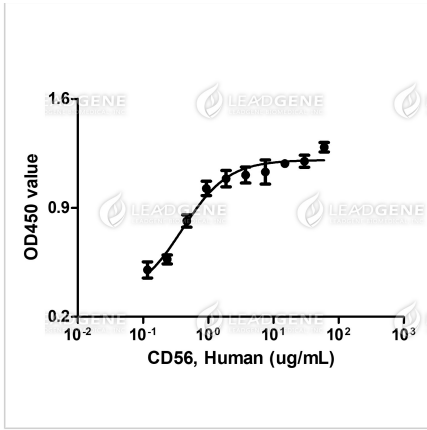
bd@leadgene.com.tw

**Innovation & Research Center**

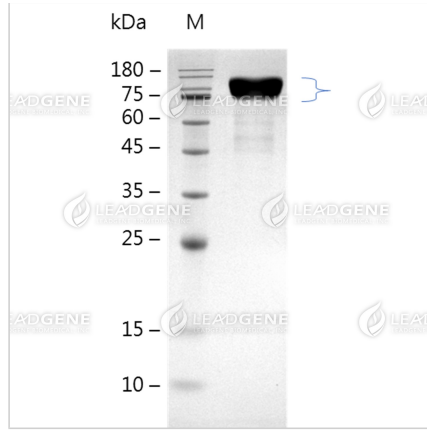
+886-2-27065528

**CLD Center**

+886-6-2536677



Human CD56, His Tag, CHO (LDG087PHM) supports the adhesion of SH-SY5Y human neuroblastoma cells, with the ED50 ranging from 0.1 to 3 µg/mL.



SDS-PAGE analysis of recombinant human CD56.

**Disclaimer :** For Research Use or Further Manufacturing Only.