

## Human BACE1, His Tag, CHO

Catalog Number	LDG130PHM
Package	5 µg / 20 µg / 100 µg / Customized package

For full product information, images and publications, please visit [our website](#).



### Specifications

#### Species of Origin

Human

#### Expression system

CHO

#### Affinity Tag

His Tag (C-term)

#### Buffer

Lyophilized from a 0.2 µm filtered solution of PBS, pH 7.4.

#### Purity

>95% as determined by SDS-PAGE analysis.

#### Molecular weight

The protein has a calculated MW of 49.25 kDa. The protein migrates as 60-75 kDa under reducing condition (SDS-PAGE analysis).

#### Endotoxin level

<0.1 EU per 1 µg of the protein by the LAL method.

#### Mycoplasma

Not detected

#### Form

Lyophilized

### Background

#### Background

BACE1 cleaves amyloid precursor protein, initiating amyloid-beta production, and is a therapeutic target for Alzheimer's disease.

#### Synonyms

Beta-secretase 1, EC:3.4.23.46, Aspartyl protease 2, ASP2, Asp 2, Beta-site amyloid precursor protein cleaving enzyme 1, Beta-site APP cleaving enzyme 1, Memapsin-2, Membrane-associated aspartic protease 2

#### Tainan Headquarter

+886-6-2536677

bd@leadgene.com.tw

#### Innovation & Research Center

+886-2-27065528

#### CLD Center

+886-6-2536677

**Uniprot ID**

P56817

**Sequence Note**

Thr 22-Thr 457

**Instruction**
**Reconstitution**

It is recommended to reconstitute the lyophilized protein in sterile H<sub>2</sub>O to a concentration not less than 0.2 mg/mL and incubate the stock solution for at least 20 min to ensure sufficient re-dissolved.

**Stability & Storage**

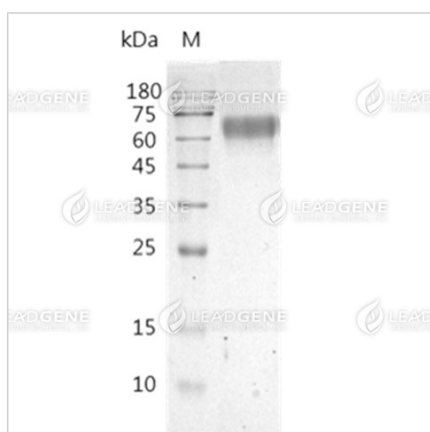
"This product is stable after storage at:

- -20°C for 12 months in lyophilized state from date of receipt.
- -20°C or -80°C for 1 month under sterile conditions after reconstitution.

Avoid repeated freeze/thaw cycles."

**Shipping**

The product is shipped with polar packs. Upon receipt, store it immediately at -20°C or lower for long term storage.

**Image**


SDS-PAGE analysis of recombinant human BACE1.

**Disclaimer** : For Research Use or Further Manufacturing Only.

**Tainan Headquarter**

+886-6-2536677

bd@leadgene.com.tw

**Innovation & Research Center**

+886-2-27065528

**CLD Center**

+886-6-2536677

**Tainan Headquarter**

+886-6-2536677

bd@leadgene.com.tw

**Innovation & Research Center**

+886-2-27065528

**CLD Center**

+886-6-2536677