

## Human Galectin-1, His Tag, E. coli

**Catalog Number** LDG140PHE

**Package** 5 µg / 20 µg / 100 µg / Customized package

For full product information, images and publications, please visit [our website](#).



### Specifications

#### Species of Origin

Human

#### Affinity Tag

His Tag (N-term)

#### Purity

>98% as determined by SDS-PAGE analysis.

#### Activity

Measured by its ability to chemoattract human THP1 cells using a concentration range of 2.5-25 µg/mL.

#### Form

Lyophilized

#### Expression system

Escherichia coli

#### Buffer

Lyophilized from a 0.2 µm filtered solution of PBS, pH 7.4.

#### Molecular weight

The protein has a calculated MW of 15.5 kDa. The protein migrates as 15 kDa under reducing condition (SDS-PAGE analysis).

#### Endotoxin level

<0.1 EU per 1 µg of the protein by the LAL method.

### Background

#### Tainan Headquarter

+886-6-2536677

bd@leadgene.com.tw

#### Innovation & Research Center

+886-2-27065528

#### CLD Center

+886-6-2536677

### Background

Galectin-1 (Gal-1) is a lectin family member. Galectin-1 contains one carbohydrate recognition domain (CRD), responsible for  $\beta$ -galactoside binding, and is biologically active as homodimers. Several binding partners for galectin-1 have been identified, including CD45, CD43, CD69, pre-BCR, and vascular endothelial Growth Factors R2. Galectin-1 is constitutively presented in the immune system and other tissues, contributing to cell growth, proliferation, and apoptosis. The galectin-1 plays a central role in regulating acute and chronic inflammatory responses.

### Uniprot ID

#P09382

### Synonyms

Gal-1, 14 kDa laminin-binding protein, HLBP14, 14 kDa lectin, Beta-galactoside-binding lectin L-14-I, Galaptin, HBL, HPL, Lactose-binding lectin 1, Lectin galactoside-binding soluble 1, Putative MAPK-activating protein PM12, S-Lac lectin 1

### Sequence Note

Ala2-Asp135

## Instruction

### Reconstitution

It is recommended to reconstitute the lyophilized protein in sterile H<sub>2</sub>O to a concentration not less than 200  $\mu$ g/mL and incubate the stock solution for at least 20 min to ensure sufficient re-dissolved.

### Stability & Storage

This product is stable after storage at:

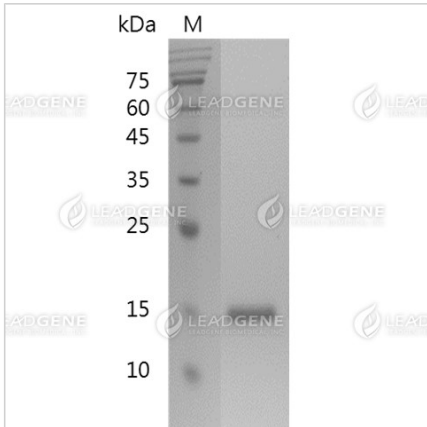
- -20°C for 12 months in lyophilized state from date of receipt.
- -20°C or -80°C for 1 month under sterile conditions after reconstitution.

Avoid repeated freeze/thaw cycles.

### Shipping

The product is shipped with polar packs. Upon receipt, store it immediately at -20°C or lower for long term storage.

Image



SDS-PAGE analysis of recombinant human Galectin-1.

**Disclaimer :** For Research Use or Further Manufacturing Only.