

## Human Galectin-16, His Tag, E. coli

**Catalog Number** LDG151PHE

**Package** 5 µg / 20 µg / 100 µg / Customized package

For full product information, images and publications, please visit [our website](#).



### Specifications

#### Species of Origin

Human

#### Affinity Tag

His Tag (N-term)

#### Purity

>98% as determined by SDS-PAGE analysis.

#### Endotoxin level

<0.1 EU per 1 µg of the protein by the LAL method.

#### Expression system

Escherichia coli

#### Buffer

Lyophilized from a 0.2 µm filtered solution of PBS, pH 7.4.

#### Molecular weight

The protein has a calculated MW of 17.4 kDa. The protein migrates as 18 kDa under reducing condition (SDS-PAGE analysis).

#### Form

Lyophilized

### Background

#### Tainan Headquarter

+886-6-2536677

bd@leadgene.com.tw

#### Innovation & Research Center

+886-2-27065528

#### CLD Center

+886-6-2536677

### Background

Galectin-16 (Gal-16) is a lectin family member and is one of the prototype galectins, but it exists as a monomer, and it is remarkably different from other prototype galectins in  $\beta$ -galactoside binding. Like galectin-13 and galectin-14, Galectin-16 is expressed in the placenta, contributing to T cell apoptosis, immune regulation, and immune tolerance, which is indispensable for fetal development. The molecular mechanism has been demonstrated that galectin-16 forms complex with c-Rel, suggesting galectin-16-activated signal transduction pathways via the c-Rel hub in B or T cells at the maternal-fetal interface.

### Sequence Note

Ser2-Arg142

### Uniprot ID

#A8MUM7

## Instruction

### Reconstitution

It is recommended to reconstitute the lyophilized protein in sterile H<sub>2</sub>O to a concentration not less than 200  $\mu$ g/mL and incubate the stock solution for at least 20 min to ensure sufficient re-dissolved.

### Stability & Storage

This product is stable after storage at:

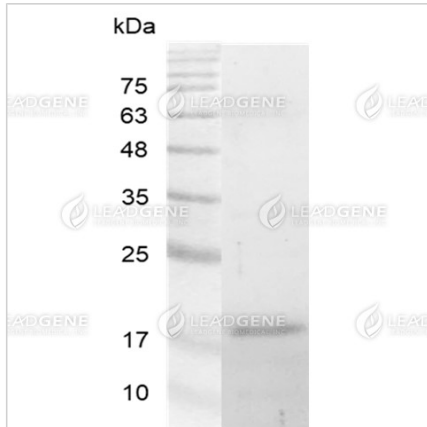
- -20°C for 12 months in lyophilized state from date of receipt.
- -20°C or -80°C for 1 month under sterile conditions after reconstitution.

Avoid repeated freeze/thaw cycles.

### Shipping

The product is shipped with polar packs. Upon receipt, store it immediately at -20°C or lower for long term storage.

Image



SDS-PAGE analysis of recombinant human Galectin-16.

**Disclaimer :** For Research Use or Further Manufacturing Only.