

## Human Sonic Hedgehog (C24II), His-SUMO Tag, E. coli

**Catalog Number** LDG177PHE

**Package** 5 µg / 20 µg / 100 µg / Customized package

For full product information, images and publications, please visit [our website](#).



### Specifications

#### Species of Origin

Human

#### Affinity Tag

His-SUMO Tag (N-term)

#### Purity

>95% as determined by SDS-PAGE analysis.

#### Endotoxin level

<0.1 EU per 1 µg of the protein by the LAL method.

#### Expression system

Escherichia coli

#### Buffer

Lyophilized from a 0.2 µm filtered solution of PBS, pH 7.4.

#### Molecular weight

The protein has a calculated MW of 31.86 kDa. The protein migrates as 35-45 kDa under reducing condition (SDS-PAGE analysis).

#### Form

Lyophilized

### Background

#### Tainan Headquarter

+886-6-2536677

bd@leadgene.com.tw

#### Innovation & Research Center

+886-2-27065528

#### CLD Center

+886-6-2536677

### Background

Sonic Hedgehog protein (SHH) plays a critical role in development of embryonic morphogenesis which mediate the process of organogenesis and central nervous system. The sonic hedgehog signal pathway also plays an important role in cancerous tumors like embryonic cerebellar tumor, prostate cancer tumours and medulloblastoma. SHH binds the receptor (Ptc1) that induces the smo protein to activate the downstream pathway, which induces the shh target gene expression.

### Uniprot ID

#Q15465

### Synonyms

Sonic hedgehog protein, HHG-1, Shh unprocessed N-terminal signaling and C-terminal autoprocessing domains, SHH

### Sequence Note

Gly25-Gly197

## Instruction

### Reconstitution

It is recommended to reconstitute the lyophilized protein in sterile H<sub>2</sub>O to a concentration not less than 200 µg/mL and incubate the stock solution for at least 20 min to ensure sufficient re-dissolved.

### Stability & Storage

This product is stable after storage at:

- -20°C for 12 months in lyophilized state from date of receipt.
- -20°C or -80°C for 1 month under sterile conditions after reconstitution.

Avoid repeated freeze/thaw cycles.

### Shipping

The product is shipped with polar packs. Upon receipt, store it immediately at -20°C or lower for long term storage.

## Image

### Tainan Headquarter

+886-6-2536677

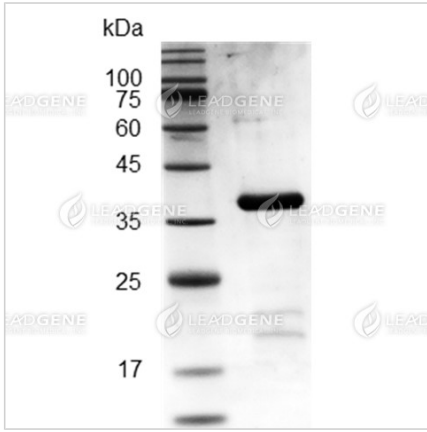
bd@leadgene.com.tw

### Innovation & Research Center

+886-2-27065528

### CLD Center

+886-6-2536677



SDS-PAGE analysis of recombinant human Sonic Hedgehog (C24II).

**Disclaimer :** For Research Use or Further Manufacturing Only.